



Chulalongkorn University
จุฬาลงกรณ์มหาวิทยาลัย
Pillar of the Kingdom

www.chula.ac.th



A Quick Tour of Chulalongkorn University

Chulalongkorn University

Phayathai Road, Pathumwan, Bangkok 10330, Thailand
For international relations enquiries: Tel. +662 218 3331

© 2012 Chula International Communication Center (CICC)



Chulalongkorn University
จุฬาลงกรณ์มหาวิทยาลัย
Pillar of the Kingdom

Contents

| | |
|--|-----------|
| A Message from the President | 02 |
| A Brief History of the University | 06 |
| Facts and Figures | 16 |
| Admission | 20 |
| Faculties, Colleges, Schools and Institutes | 26 |
| Facilities and Services | 32 |
| Student Activities | 40 |
| Map and Contact Information | 44 |

A Message
from
the President



Phra Kiew, the emblem of
Chulalongkorn University.



“The Pride of Chula is in Serving the Public”

Chulalongkorn University, founded nearly a century ago, was Thailand’s first university. As a national intellectual center, the university produces graduates of the highest quality, endowed with a high level of knowledge and skills in the arts and sciences that they can use to contribute to society.

For more than 90 years now, Chulalongkorn has been committed to the ongoing development of programs, human resources, facilities and services. With the cooperation of our alumni, we have been building an intellectual community devoted to serving Thai society and the nation. During national disasters and turmoil, Chulalongkorn serves as a central pillar of support, helping to find the solutions and assistance needed to solve these problems.

Chulalongkorn University should be thought of not only as an institution of learning, but also as a caring home. We are determined to enrich our society with graduates who possess not just the highest qualifications, but also impeccable integrity in conformity with the credo, “The Pride of Chula is in Serving the Public”.

P. Kamolrattanakul

Professor Pirom Kamolrattanakul, M.D.

President

April, 2012



Chulalongkorn University was nominated as one of the top 10 most peaceful and relaxing spaces in Bangkok.

A Brief History of the University



Left-King Chulalongkorn (Rama V)
Right-King Vajiravudh (Rama VI)

Chulalongkorn University
Auditorium



National Stadium



Chulalongkorn University, the oldest and one of the most prestigious universities in Thailand, was founded in its present form in 1917 by King Vajiravudh (Rama VI). It was named after his father, King Chulalongkorn (Rama V), who laid the foundations for modern education in Thailand. In keeping with the shared vision of both kings, Chulalongkorn University has maintained its reputation for academic excellence ever since, and has been instrumental in national development.

Chulalongkorn University, known familiarly as “Chula”, extends over a 456-acre tract of land. It has grown constantly in the near-century since its founding, and today is a comprehensive university offering over 500 programs in almost all areas of study, 87 of them international. Both traditional academic disciplines and interdisciplinary studies are included. The enrolment is currently approximately 39,000 students.

Emblem

The emblem of Chulalongkorn University is the Phra Kiew, which is derived from the coronet formerly worn by princes and princesses. It was used as part of the royal insignia during the reign of King Chulalongkorn and was permitted to be used as the emblem of the Royal Page School, which subsequently became Chulalongkorn University.





Color

The university's official color is Pink. In 1935, the CU Student Union selected "pink" as the university's symbolic color for the 1st traditional Chulalongkorn University – Thammasat University football match, as in Thai culture, it is associated with Tuesday, the day King Chulalongkorn was born. Since that time, pink has remained the university's color.



Chulalongkorn University's Centenary Vision

Chulalongkorn University is a source of higher learning, serving as a national resource center and intellectual leader in planning and implementing sustainable development.

Mission

1. To pioneer new forms of knowledge and employ that knowledge for the benefit of Thai society
2. To stimulate intellectual activity and transfer knowledge to the public to help Thailand develop toward self-sustainability in the global community
3. To create graduates whose knowledge and skills meet international standards and meet the advancing needs of Thai society
4. To endow students with the ethics, sense of accountability and moral qualities that will enable them, as graduates, to take positions of leadership in society
5. To cultivate Thailand's arts and culture



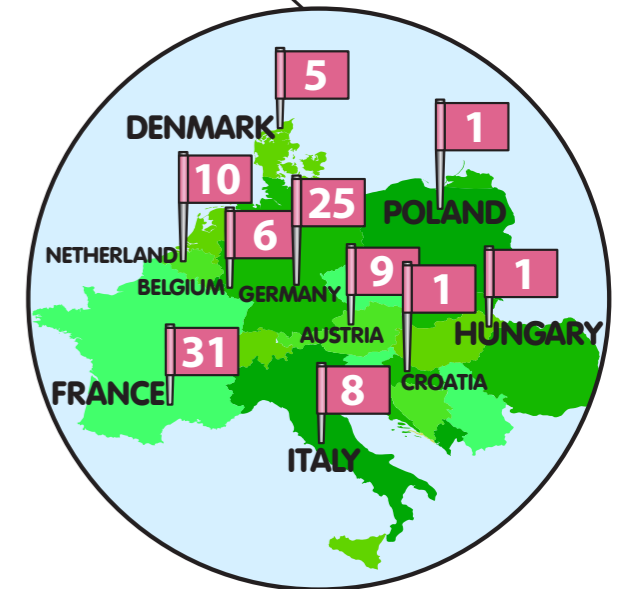
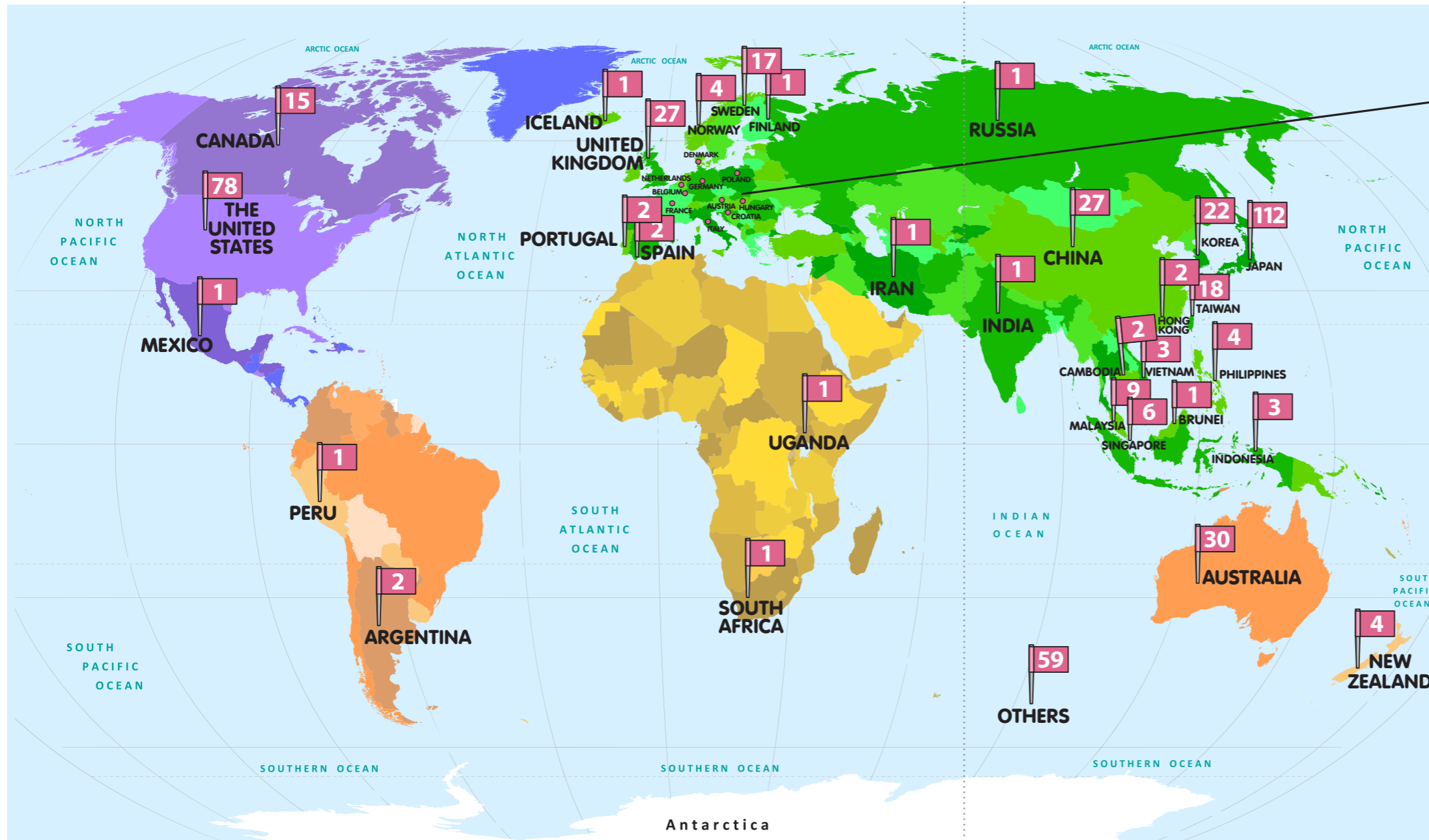
Statistics of Academic Cooperation Agreements

Chulalongkorn University has reached agreement with universities/institutions in 44 countries with the following details:

| Level of Cooperation | |
|--------------------------------|------------|
| University-to-University Level | 306 |
| Faculty-to-Faculty Level | 237 |
| University-to-Faculty Level | 14 |
| Total | 557 |



Number of Partner Universities per Country



*Information as of 2010



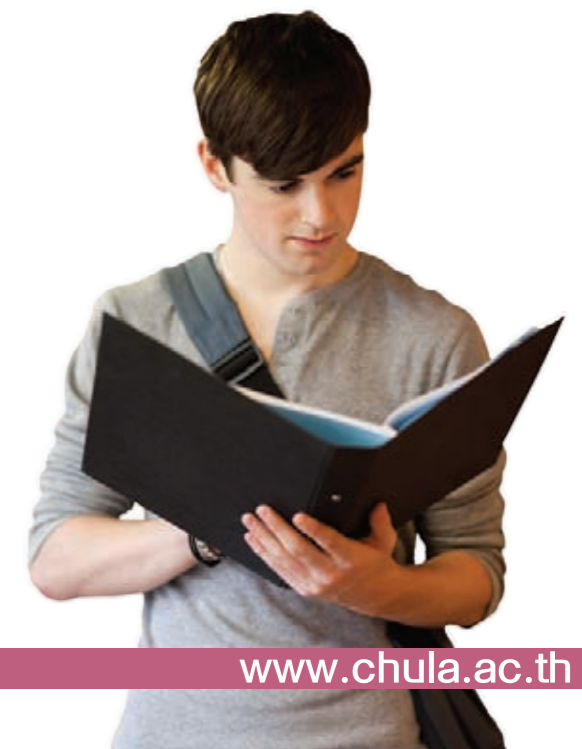
Chulalongkorn University and the International Standard

Chulalongkorn University's international programs have enjoyed a long and deserved high reputation for all-round academic attainment, and this was cemented with the announcement of the QS (Quacquarelli Symonds) World Rankings for 2011-2012, which sees the university achieving a nine-place rise in the table from 180th to 171st place among the world's top 2,000 universities. Chulalongkorn University is the high-ranking university in Thailand for four out of five areas of academic discipline:

- Art & Humanities Ranking: 69th of the world
- Engineering & IT Ranking: 104th of the world
- Life Science & Biomedicine Ranking: 78th of the world
- Natural Science Ranking: 138th of the world
- Social Science Ranking: 68th of the world

Moreover, the university ranks 1st in Thailand, 100th in Asia and 492nd in the world according to SCIMAGO Institutions Rankings World Report 2011. The report aims at becoming an evaluation framework of research performance to worldwide research organizations.

The policy of Chulalongkorn University aims at maintaining its status as an outstanding national university while also achieving standards at a high international level as well. It is also the university's goal to attract more than 1,000 of the top overseas students together with 39,000 local students. Currently, a new dormitory is being constructed to house 1,500 students and teachers.



Facts and Figures

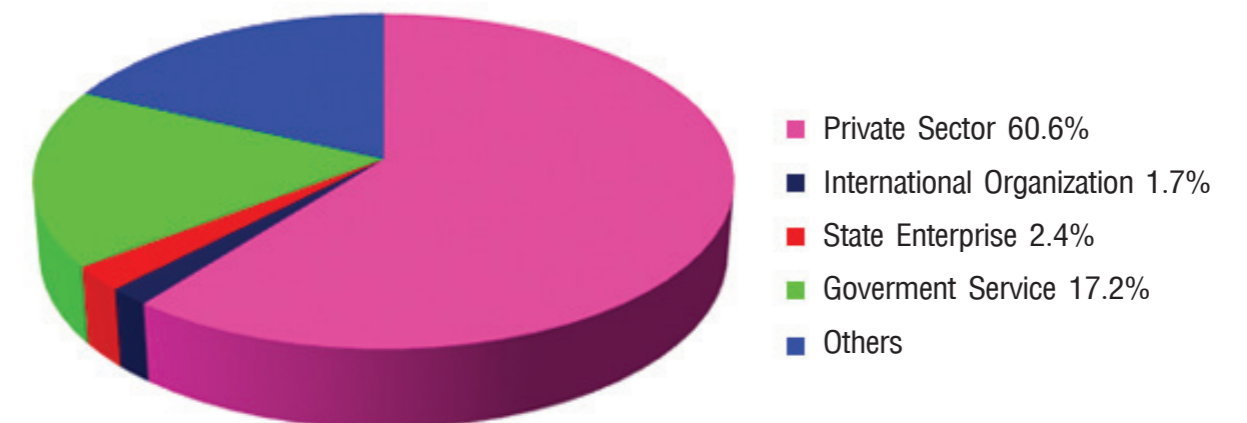


Number of Students Enrolled at Chulalongkorn University for the First Semester of the Academic Year 2011

| Level of Study | Dual Semester | | | Trimester | | | Dual Semester International | | | Total | | |
|--|---------------|---------------|---------------|------------|------------|--------------|-----------------------------|--------------|--------------|---------------|---------------|---------------|
| | Male | Female | Total | Male | Female | Total | Male | Female | Total | Male | Female | Total |
| Studying individual subjects (undergraduate level) | 2 | 4 | 6 | - | - | - | 4 | 3 | 7 | 6 | 7 | 13 |
| Bachelor's Degree | 8,600 | 13,679 | 22,279 | - | - | - | 1,249 | 1,625 | 2,874 | 9,849 | 15,304 | 25,153 |
| Graduate Certificate | 18 | 28 | 46 | - | - | - | - | - | - | 18 | 28 | 46 |
| Master's Degree | 3,877 | 5,689 | 9,566 | 446 | 520 | 966 | 36 | 106 | 142 | 4,359 | 6,315 | 10,674 |
| High-level Certificate | 278 | 408 | 686 | - | - | - | - | - | - | 278 | 408 | 686 |
| Doctorate Degree | 982 | 1,442 | 2,424 | 33 | 41 | 74 | 10 | 7 | 17 | 1,025 | 1,490 | 2,515 |
| Studying individual subjects (graduate level) | 5 | 1 | 6 | - | 2 | 2 | 2 | 4 | 6 | 7 | 7 | 14 |
| Total | 13,762 | 21,251 | 35,013 | 479 | 563 | 1,042 | 1,301 | 1,745 | 3,046 | 15,542 | 23,559 | 39,101 |



Distribution of Employed 2009 Graduates by Employment Sector



Admission





To apply to an international program, you can contact the program administrator directly.

Academic Calendar

| Academic Calendar | Semester | Classes begin | Classes end | Semester ends |
|----------------------|----------|-----------------------------|-----------------------------|-----------------------------|
| Two-Semester System | First | 1 st week of Jun | Last week of Sep | 2 nd week of Oct |
| | Second | 1 st week of Nov | Last week of Feb | 1 st week of Mar |
| | Summer | 1 st week of Apr | 2 nd week of May | 2 nd week of May |
| Trimester System | First | 1 st week of Jun | 3 rd week of Sep | Last week of Sep |
| | Second | 1 st week of Oct | 2 nd week of Jan | 3 rd week of Jan |
| | Third | Last week of Jan | 2 nd week of May | 3 rd week of May |
| International System | First | 2 nd week of Aug | 1 st week of Dec | 3 rd week of Dec |
| | Second | 2 nd week of Jan | Last week of Apr | 3 rd week of May |
| | Summer | 1 st week of Jun | Last week of Jul | Last week of Jul |

Note:

- Two-semester system is used for all regular programs which taught in Thai and some international graduate programs.
- Trimester system is used for some international graduate programs.
- International system is used for all international undergraduate programs and some international graduate programs.

However, an applicant must check the semester system before submitting the application. For degree-seeking student, the application form must submit to the Faculty concerned directly. For exchange student, the application form must submit through the International Office of home university.

Office of International Affairs Tel: +662 218 3331-5 Fax:+662 216 1299
E-mail: int.off@chula.ac.th Website: www.inter.chula.ac.th





Fees for International Students (Regular Courses)

Group 1: Faculties of Medicine, Dentistry, Veterinary Science, Pharmaceutical Sciences, Allied Health Sciences, Engineering, Science, Architecture, Communication Arts, Psychology, Nursing and Sports Science

Group 2: Faculties of Commerce and Accountancy, Economics, Law, Arts, Political Science, Education, Fine and Applied Arts and Population Studies

Undergraduate Level

| Full-Time Student | Group | First/Second Semester | Summer Semester |
|-------------------|-------------|-----------------------|-----------------|
| | 1 | 62,500 Baht | 36,000 Baht |
| 2 | 59,000 Baht | 36,000 Baht | |

| Visiting Student | Group | First/Second Semester | Summer Semester |
|------------------|-------------|-----------------------|-----------------|
| | 1 | 15,625 Baht | 9,000 Baht |
| 2 | 14,750 Baht | 9,000 Baht | |

Graduate Level

| Full-Time Student | Group | First/Second Semester | Summer Semester |
|-------------------|-------------|-----------------------|-----------------|
| | 1 | 81,500 Baht | 45,000 Baht |
| 2 | 76,000 Baht | 45,000 Baht | |

| Visiting Student | Group | First/Second Semester | Summer Semester |
|------------------|-------------|-----------------------|-----------------|
| | 1 | 40,750 Baht | 22,500 Baht |
| 2 | 38,000 Baht | 22,500 Baht | |

Remarks:

- Exchange students will be exempted from tuition and other fees.
- Visiting students are responsible for tuition and other fees themselves.
- Please contact the faculty directly to update the latest fee.

For international relations enquiries, please contact Office of International Affairs, Chulalongkorn University, Chamchuri 1 Building, Phayathai Road, Pathumwan, Bangkok, Thailand 10330
Tel: +662 218 3331-5 Fax: +662 216 1299
Website: www.inter.chula.ac.th/inter/internationalstudents/frame.htm



Faculties,
Colleges, Schools
and Institutes





Faculties

1. Faculty of Allied Health Sciences
2. Faculty of Architecture
3. Faculty of Arts
4. Faculty of Commerce and Accountancy
5. Faculty of Communication Arts
6. Faculty of Dentistry
7. Faculty of Economics
8. Faculty of Education
9. Faculty of Engineering
10. Faculty of Fine and Applied Arts
11. Faculty of Law
12. Faculty of Medicine
13. Faculty of Nursing
14. Faculty of Pharmaceutical Sciences
15. Faculty of Political Science

16. Faculty of Psychology
17. Faculty of Science
18. Faculty of Sports Science
19. Faculty of Veterinary Science





Maha Chakri Sirindhorn Building



Chamchuri 9 Building

Colleges, Schools and Institutes

- **The Units Responsible for Teaching and Research**

1. Aquatic Resources Research Institute
2. College of Population Studies
3. College of Public Health Sciences
4. CU Language Institute
5. Energy Research Institute
6. Environmental Research Institute
7. Graduate School
8. Institute of Asian Studies
9. Institute of Thai Studies
10. Metallurgy and Materials Science Research Institute
11. Office of the Commission on Agricultural Resource Education (OCARE)
12. Sasin Graduate Institute of Business Administration
13. Scientific and Technological Research Equipment Center

14. Social Research Institute
15. The Institute of Biotechnology and Genetic Engineering
16. The Petroleum and Petrochemical College
17. The Sirindhorn Thai Language Institute
18. Transportation Institute

- **The Units Responsible for Other Affairs**

1. Center of Academic Resources
2. Office of Academic Affairs
3. Office of Information Technology
4. Office of the Learning Network for the Region
5. Office of the Registrar

- **Affiliated Institutes**

1. Police Nursing College
2. The Thai Red Cross College of Nursing



Facilities and Services



Chulalongkorn University
Sports Complex

The university has built a number of facilities and established a range of services to meet the needs of faculty members, personnel, and students. These include dormitories, healthcare facilities, book centers, sports centers, a cooperative stores, consultancies and transportation.



Chulalongkorn University Health Service Center (CUHSC)

Health Care

The Chulalongkorn University Health Service Center (CUHSC), a health clinic located on the second floor of the Chamchuri 9 Building, provides preventative care, health promotion, medical treatment, physical rehabilitation, and miscellaneous services to current students, university staff, the spouses, parents and children of university staff members and retired university staff. CUHSC is supervised by general practitioners and specialists from King Chulalongkorn Memorial Hospital. CUHSC provides services from 8:30 a.m. until 3:30 p.m., Monday through Friday. For more information, please contact +662 218 0568

Students suffering from serious illness should consult a doctor at King Chulalongkorn Memorial Hospital, located on the corner of Henri Dunant and Rama IV roads.



Dormitories

■ Suksit Nives

Suksit Nives International House is an international dormitory available to foreign students on condition that there is a vacancy, and that they submit an application for residence there in time. The eight-storey residence hall has 97 rooms, all with air conditioning and modern conveniences, round-the-clock security service and a fire prevention system.

| Type of Room | Baht/Person/Month |
|--------------|-------------------|
| Single | 7,500 |
| Double | 5,000 |

Contact: Suksit Nives International House

759 Soi Chula 6 Bunthadthong Rd, Pathumwan, Bangkok 10330, Thailand

Tel: +662 216 0040-6, +662 612 4600-9 Fax: +662 216 0040

■ U-Center

U-Center (Puang Chomphu Dormitory) is a privately-run dormitory under the supervision of the University. It is located directly opposite the Chulalongkorn Secondary Demonstration School and Chamchuri 9 Building. The students may rent rooms at this dormitory at a reasonable price.

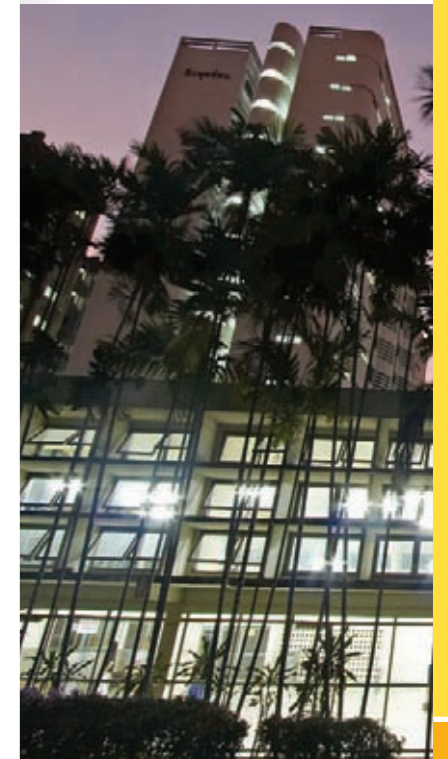


| Type of Room | Baht/Person/Month |
|--------------|-------------------|
| Single | 6,900 |
| Double | 3,650 |

Contact: U-Center

198 Soi Chula 42, Buntadthong Road, Pathumwan, Bangkok 10330, Thailand Tel: +662 216 3424 Fax: +662 216 3427

**A one-month deposit and advance payment of the room rental fee for one month are required. The deposit will be returned after a one-month advance notice of leaving.*



Sports Centers

Chulalongkorn University has a number of sports facilities including a large outdoor stadium, sports complex, outdoor tennis courts and two swimming pools.



The Chulalongkorn Stadium is a large outdoor stadium that includes a soccer field, certified as the first in Thailand by the International Federation of Association Football (FIFA); eight lanes of rubber racetrack, certified by the International Association of Athletics Federations (IAAF); and surrounding stands that can accommodate 20,000 – 25,000 people.

The CU Sports Complex is a multi-purpose indoor court that can be used for a variety of sports including volleyball, basketball, table tennis, badminton, martial arts practice (judo and boxing), gymnastics, swimming, fitness, weightlifting, and more.

The outdoor tennis courts comprises 10 hard courts, each equipped with nightlights and knock boards. There is also a clubhouse and restaurant, which offers a serene and relaxing atmosphere.



The Swimming Pools are a 25-meter pool with six shallow lanes for beginners, and a 50-meter standard pool with eight deep lanes suitable for competitions. The surrounding stands can seat 400 people.

For further details on sports facilities, call the Chulalongkorn University Sport Center at Tel. +662 218 2824-7 and +662 218 2840. or www.cusc.chula.ac.th

Book Centers

The University has cooperative stores that sell items like stationery at very affordable prices. Earnings are shared among members and the university. The bookstores offer books, including textbooks, magazines, journals and newspapers for general reading.

Museum

Chulalongkorn University incorporates a variety of museums and other fascinating places open to the public for visiting or studying, including:

- Dara Pirom Palace
- Memorial Center of Chulalongkorn University
- Museum of Geology
- Museum of Natural History
- Museum of Thai Classical Music
- Museum of Thai Medicinal Herbs and Pharmaceutical History
- Snail Museum of Thailand



Chamchuri 9 Building

The Academic Learning Center

Chamchuri 9 is a new, six-storey building that houses the Academic Learning Center, and facilities that provide Chulalongkorn University students with a well-equipped area for academic activities. It offers full wi-fi access.

Opening Hours

| | |
|---------------|--------------|
| Monday-Friday | 7:00 - 23:00 |
| Saturday | 8:00 - 20:00 |
| Sunday | 8:00 - 16:00 |

(One month before the final examination, the center opens 6:00-24:00)

Facilities in the building include:

- 1st Floor:** CU Savings Cooperative headquarter, post office, coffee bars and snack shops
- 2nd Floor:** CU Health Service Center, opens from 8:30 a.m. until 3:30 p.m. (free of charge for CU students and staff)
- 3rd Floor:** Learning Zone with a 600-seat capacity, a photocopy shop, coffee and snack shops and a stationery and IT shop
- 4th Floor:** Learning Zone with a 500-seat capacity and a 150-seat self-study computer room
- 5th-6th Floors:** Learning Zone and Leisure Zone with a 1,000-seat capacity.

CU students are required to have their student cards scanned upon entering the Academic Learning Center on the 3rd Floor and above.

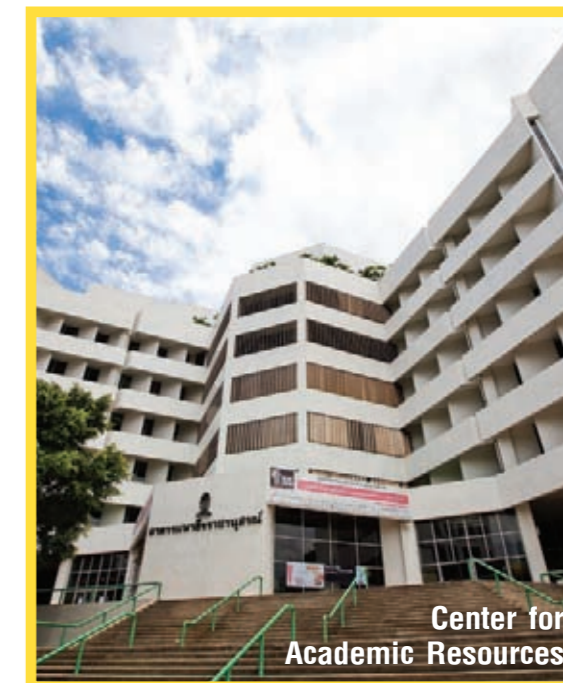


Center for Academic Resources (Central Library)

The Center for Academic Resources, located in the Maha Theerarajanusorn Building, consists of six units: the Central Library, the National Documentary Center, the Audio-Visual Center, the International Information Resources Service, and Art Gallery, and the Distance Learning Network (CU-GDLN). All six units provide services extending over every form of information resource: books, periodicals, printed matter, databases, audio-visual materials, and electronic materials. Students can also access the CU cyber area on the Second Floor for Internet searches.

International students automatically become members of the Chulalongkorn University Library Network (CHULALINET) upon registration, and are entitled to make use of all libraries included in the Chulalongkorn University Library Network and to borrow library materials in accordance with library rules.

Membership is automatically renewed at each semester's registration. Students are also welcome to access the CU Digital Library to search information resources at the center's website www.car.chula.ac.th. For further information on academic resources and services, please contact the Center for Academic Resources at +662 218 2905.



Center for Academic Resources

Library Networks

| | | |
|---------------------------------------|-----------|-------------------|
| Number of Members | 16 | Faculties |
| | 22 | Institutions |
| Number of Books | 766,632 | Titles |
| | 1,374,374 | Books |
| Number of Journals (subscribe) | 4,587 | Titles |
| Thai | 2,278 | Titles |
| English | 2,309 | Titles |
| Number of Databases | | |
| Full Text | 59 | Databases |
| Index & Abstracts | 15 | Databases |
| Stand Alone Database | 42 | Databases |
| E-journals | 32/10,320 | Databases/ Titles |
| E-books | 21/26,707 | Databases/ Titles |

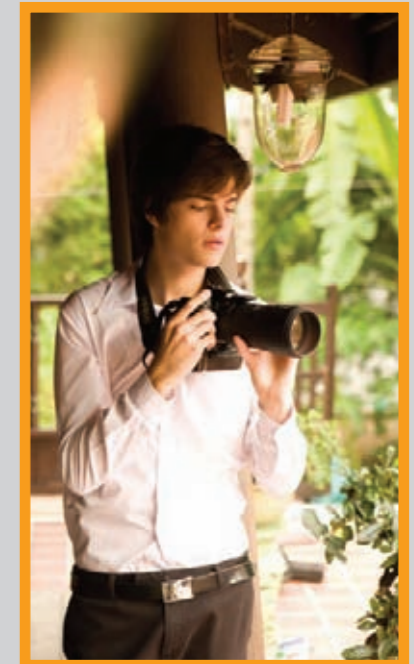
Student Activities





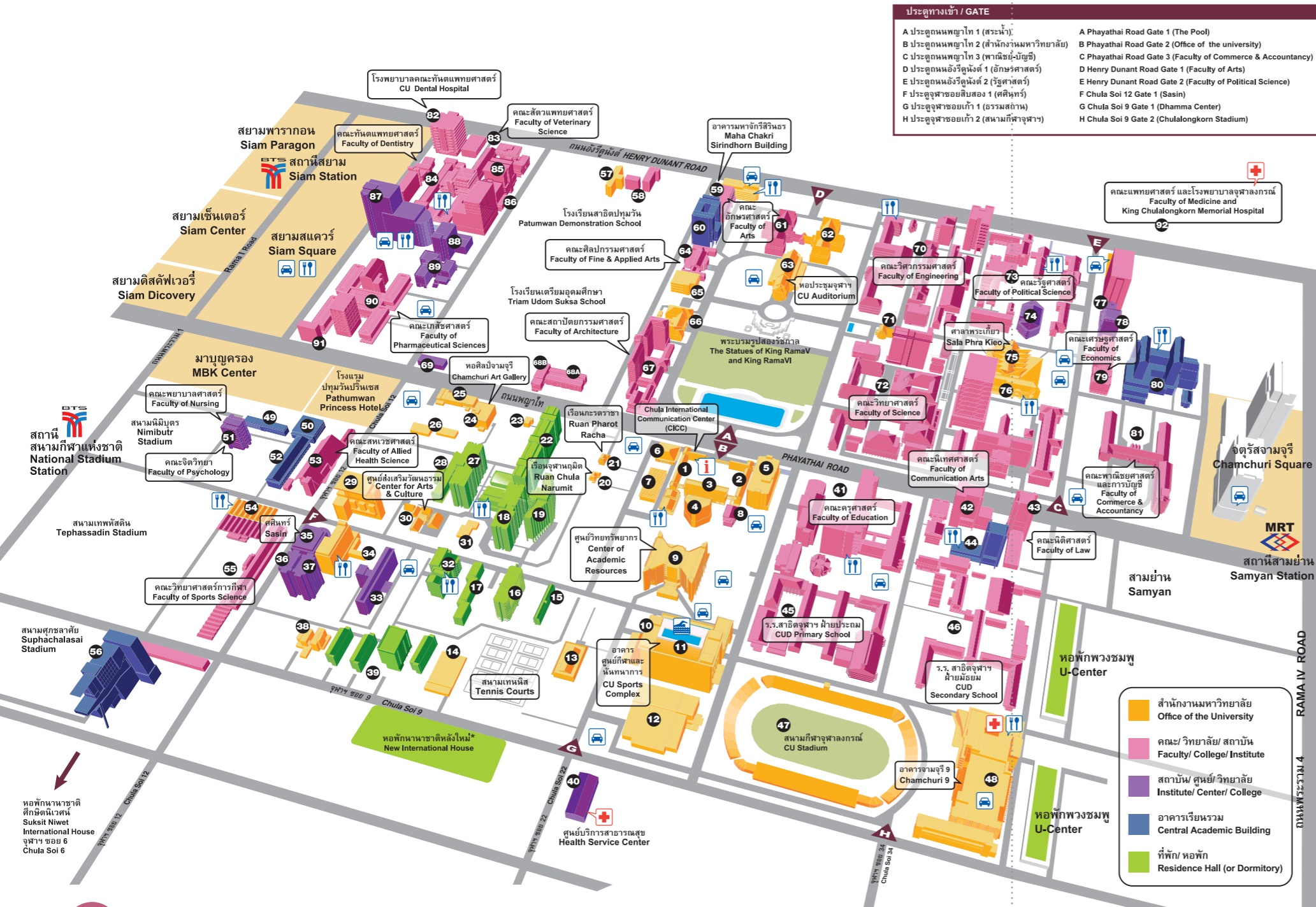
University life is the beginning of adulthood as it comes with more responsibilities in all matters – not only studying but adjusting to a new social life as well. By learning through activities, Chulalongkorn University provides a variety of club activities involving Thai music, photography, theater, dancing, rural area development camps for hill tribes and sports including takraw, aikido, martial arts, hockey, tennis, shooting, basketball and football.

Also, volunteer activities for the benefit of community and society are Chulalongkorn University's key focus to foster volunteer spirit and social awareness among students and to produce truly great graduates to the society.



Map and
Contact
Information





| ประตูทางเข้า / GATE | ชื่อสถานที่ (เรียงตามตัวอักษร) |
|---|---|
| A ประตูถนนพญาไท 1 (สระน้ำ) | A Phayathai Road Gate 1 (The Pool) |
| B ประตูถนนพญาไท 2 (สำนักงานมหาวิทยาลัย) | B Phayathai Road Gate 2 (Office of the university) |
| C ประตูถนนพญาไท 3 (พาณิชย์บัญชี) | C Phayathai Road Gate 3 (Faculty of Commerce & Accountancy) |
| D ประตูถนนอังรีดูนังต์ 1 (อักษรศาสตร์) | D Henry Dunant Road Gate 1 (Faculty of Arts) |
| E ประตูถนนอังรีดูนังต์ 2 (รัฐศาสตร์) | E Henry Dunant Road Gate 2 (Faculty of Political Science) |
| F ประตูซอยซอยสอง 1 (คตินทร์) | F Chula Soi 12 Gate 1 (Sasin) |
| G ประตูซอยซอยเก้า 1 (ธรรมสถาน) | G Chula Soi 9 Gate 1 (Dhamma Center) |
| H ประตูซอยซอยเก้า 2 (สนามกีฬาฟุตซอล) | H Chula Soi 9 Gate 2 (Chulalongkorn Stadium) |

| ชื่อสถานที่ (เรียงตามตัวอักษร) | เลขที่ | ชื่อสถานที่ (เรียงตามตัวอักษร) | เลขที่ | ชื่อสถานที่ (เรียงตามตัวอักษร) | เลขที่ |
|-----------------------------------|--------|---|--------|---|--------|
| สำนักงานมหาวิทยาลัย | | คณะ/วิทยาลัย/สถาบัน | | อาคาร/สถาบัน/ศูนย์/วิทยาลัย | |
| ธรรมสถาน | 13 | คณะครุศาสตร์ | 41 | ศูนย์บริการสาธารณสุข | 40 |
| เรือนสุโขทัย | 20 | โรงเรียนสาธิตฝ่ายประถม | 45 | อาคารบรมราชชนนีศรีศพรหม | 51 |
| เรือนพาซา | 31 | โรงเรียนสาธิตฝ่ายมัธยม | 46 | อาคารประชาธิปไตย | 78 |
| เรือนระตราชา | 21 | คณะจิตวิทยา (อาคารบรมราชชนนีศรีศพรหม) | 51 | สถาบันเอเชียศึกษา | |
| เรือนอนุเสาวรีย์ | 23 | คณะทันตแพทยศาสตร์ | 84 | สถาบันเอเชียศึกษา | |
| โรงพิมพ์แห่งจุฬาลงกรณ์มหาวิทยาลัย | 75 | โรงพยาบาลคณะทันตแพทยศาสตร์ | 82 | สถาบันการขนส่ง | |
| ศาลาพระแก้ว | 30 | คณะนิติศาสตร์ | 43 | อาคารเปร่มนัตริ | 74 |
| ศูนย์ส่งเสริมวัฒนธรรม (เรือนไทย) | 30 | คณะนิเทศศาสตร์ | 42 | สถาบันภาษา | |
| สนามกีฬาฟุตซอลมหาวิทยาลัย | 17 | คณะพยาบาลศาสตร์ | 51 | อาคารวิจัยจุฬาลงกรณ์มหาวิทยาลัย | 37 |
| สนามกีฬาในร่ม | 12 | (อาคารบรมราชชนนีศรีศพรหม) | 47 | ศูนย์บริการวิชาการ | |
| สมาคมहितเกาช่างกรรมการมหาวิทยาลัย | 10 | คณะพาณิชยศาสตร์และการบัญชี | 81 | อาคารวิจัยกิตติ | 87 |
| สำนักงานจัดการทรัพย์สิน | 25 | คณะแพทยศาสตร์ | 92 | ศูนย์หนังสือจากฯ | |
| หอประชุมจุฬาลงกรณ์มหาวิทยาลัย | 6 | โรงพยาบาลจุฬาลงกรณ์ | 90 | อาคารวิจัยพัฒนา | 33 |
| อาคารจักรพงษ์ | 71 | สถาบันปฏิบัติการแห่งเภสัชกรรมชุมชน (โอสถศาลา) | 91 | ศูนย์บริการวิชาการ | |
| อาคารจางจู้ 1 | 1 | คณะรัฐศาสตร์ | 73 | อาคารวิจัย | 77 |
| อาคารจางจู้ 2 | 2 | คณะวิทยาศาสตร์ | 72 | วิทยาลัยประชากรศาสตร์ | |
| อาคารจางจู้ 3 | 3 | คณะวิทยาศาสตร์การกีฬา | 55 | สถาบันวิจัยสังคม | |
| อาคารจางจู้ 4 | 4 | คณะวิศวกรรมศาสตร์ | 70 | อาคารศัลยกรรม | 35 |
| อาคารจางจู้ 5 | 5 | คณะศิลปกรรมศาสตร์ | 64 | สถาบันบัณฑิตบริหารธุรกิจศศินทร์ | 69 |
| อาคารจางจู้ 6 | 6 | อาคารศิลปกรรม 3-4 | 58 | อาคารศูนย์กิตติ | |
| อาคารจางจู้ 7 | 7 | คณะสัตวศาสตร์ | 79 | ศูนย์ส่งเสริมวิจัยวิทยาศาสตร์และเทคโนโลยี | 89 |
| อาคารจางจู้ 8 | 8 | คณะสถาปัตยกรรมศาสตร์ | 67 | สถาบันวิจัยภาวะแวดล้อม | |
| อาคารจางจู้ 9 | 9 | คณะสถาปัตยกรรมศาสตร์ | 67 | สถาบันวิจัยวิทยาศาสตร์การแพทย์ | 88 |
| อาคารจางจู้ 10 | 10 | อาคารเลิศ อูริเยะเนินท์ | 68 A | อาคารสถาน 3 | |
| อาคารจางจู้ 11 | 11 | อาคารโฆมากร | 68 B | วิทยาลัยวิทยาศาสตร์สาธารณสุข | |
| อาคารมหาจุฬาลงกรณ์ | 6 | คณะสัตวศาสตร์ | 53 | สถาบันเทคโนโลยีการวิศวกรรมพลังงาน | |
| อาคารมหาจักรพรรดิ | 9 | คณะสัตวแพทยศาสตร์ | 83 | สถาบันเทคโนโลยีการพลังงาน | |
| อาคารมหาธรรมศาสตร์ | 26 | อาคารวิจัย พัฒนา และบริการด้านสัตวแพทยศาสตร์ | 85 | สถาบันเทคโนโลยีการพลังงาน | |
| อาคารมหาบัณฑิต | 26 | อาคารศูนย์วิจัยและพัฒนาจุฬาลงกรณ์มหาวิทยาลัย | 86 | สถาบันวิจัยวิทยาการทางน้ำ | |
| อาคารมหาเนกัว | 34 | คณะอักษรศาสตร์ | 61 | สถาบันวิจัยพลังงาน | |
| อาคารศาล | 36 | อาคารมหาจักรพรรดิ | 59 | | |
| อาคารศิลปะวัฒนธรรม* | 11 | บัณฑิตวิทยาลัย | 8 | | |
| อาคารศูนย์กีฬาและนันทนาการ | 14 | สำนักงานคณะกรรมการการศึกษาระดับมัธยมศึกษา | 57 | | |
| อาคารหน่วยบริการอาคาร* | 11 | การเกษตร (อาคารจางจู้ 1) | 36 | | |
| | | วิทยาลัยโตรีมและโตรีม | | | |
| | | สถาบันวิจัยโตรีมและโตรีม | | | |

| Building Name (listed alphabetically) | No. | Building Name (listed alphabetically) | No. |
|---|-----|--|------|
| OFFICE OF THE UNIVERSITY | | FACULTY/ COLLEGE/ INSTITUTE | |
| Center for Arts and Culture (Ruan Thai) | 30 | Faculty of Allied Health Sciences | 53 |
| Chakrabongse Building | 71 | Faculty of Architecture | 67 |
| Chamchuri 1 | 1 | Lert Urasayanandana Building | 68 A |
| Chamchuri 2 | 2 | Wothayakorn Building | 68 B |
| Chamchuri 3 | 3 | Faculty of Arts | 61 |
| Chamchuri 4 | 4 | Maha Chakri Sirindhorn Building | 59 |
| Chamchuri 5 | 5 | Faculty of Commerce & Accountancy | 81 |
| Chamchuri 8 | 24 | Faculty of Communication Arts | 42 |
| Chamchuri 9 | 48 | Faculty of Dentistry | 84 |
| Chamchuri 10 | 29 | CU Dental Hospital | 82 |
| Chula Chakrabongse Building | 76 | Faculty of Economics | 79 |
| Chula Phat 9 | 57 | Faculty of Education | 41 |
| Chula Wit 1 | 54 | CU Demonstration Elementary School | 45 |
| CU Alumni Association | 25 | CU Social Research Institute | 46 |
| CU Auditorium | 63 | Faculty of Engineering | 70 |
| CU Printing House | 7 | Faculty of Fine & Applied Arts | 64 |
| CU Sports Complex | 11 | FAA Buildings 3-4 | 58 |
| CU Stadium | 47 | Faculty of Law | 43 |
| Dhamma Center | 13 | Faculty of Medicine | 92 |
| Exhibition Hall* | 65 | King Chulalongkorn Memorial Hospital | |
| Indoor Stadium | 12 | Faculty of Nursing | 51 |
| Indoor Stadium 2 | 10 | (Boromaratchachonnaniattaphat) | |
| Maha Chulalongkorn Building | 62 | Faculty of Pharmaceutical Sciences | 90 |
| Maha Thirarachansorn Building | 9 | Community Pharmacy (Osot Sala) | 91 |
| Office of Property Management | 6 | Faculty of Political Science | 73 |
| Performance Hall* | 36 | Faculty of Psychology | 51 |
| Plant Nursery | 61 | (Boromaratchachonnaniattaphat) | |
| Ruan Anasakorn | 23 | Faculty of Science | 72 |
| Ruan Chula Narumit | 20 | Faculty of Sports Science | 55 |
| Ruan Pharot Racha | 21 | Faculty of Veterinary Science | 83 |
| Sala Phra Kieo | 75 | R&D and Veterinary Science Service Building 85 | |
| Sasabol Recreation Center | 34 | CU Laboratory Animal Center Building | 86 |
| Service Unit Building* | 14 | Graduate School | 8 |
| Transportation Section | 26 | Petroleum and Petrochemical College Building | 36 |
| Waen Kaew Building | 38 | Metallurgy and Material Science Research | |
| | | The Office of the Commission on | 57 |
| | | Agricultural Resource Education (Chula Wit 1) | |

แผนที่จุฬาลงกรณ์มหาวิทยาลัย Chulalongkorn University Map

- ▲ ประตูเข้า - ออก Gate
- i ศูนย์ข้อมูลสำหรับผู้มาติดต่อ Information Center
- P ลานจอดรถ Parking Lot
- 🍴 โรงอาหาร, ร้านอาหาร Canteen, Restaurant
- 🏊 สระว่ายน้ำ Swimming Pool
- 🏥 ศูนย์บริการสุขภาพ Health Service Center
- 🚊 รถไฟฟ้า Bangkok Mass Transit System (Sky train)
- 🚇 รถไฟฟ้าใต้ดิน Mass Rapid Transit (Subway)

*ชื่ออาคารอาจมีการเปลี่ยนแปลง
 *Building names are subject to change.

Information as of May 2011

Produced by Chula International Communication Center (CICC)



Contact:

For international relations enquiries:

Office of International Affairs

Chamchuri 1 Building, Chulalongkorn University

Phayathai Road, Pathumwan, Bangkok 10330, Thailand

Tel: +662 218 3331-5

Fax: +662 216 1299

Email: int.off@chula.ac.th

Website: www.inter.chula.ac.th

For more general information about Chulalongkorn University:

Chula International Communication Center (CICC)

Chamchuri 1 Building, Chulalongkorn University

Phayathai Road, Pathumwan, Bangkok 10330, Thailand

Tel: +662 218 3280

Fax: +662 218 3281

Email: cicc@chula.ac.th

Website: www.cicc.chula.ac.th

**All information is subject to change without prior notice.*